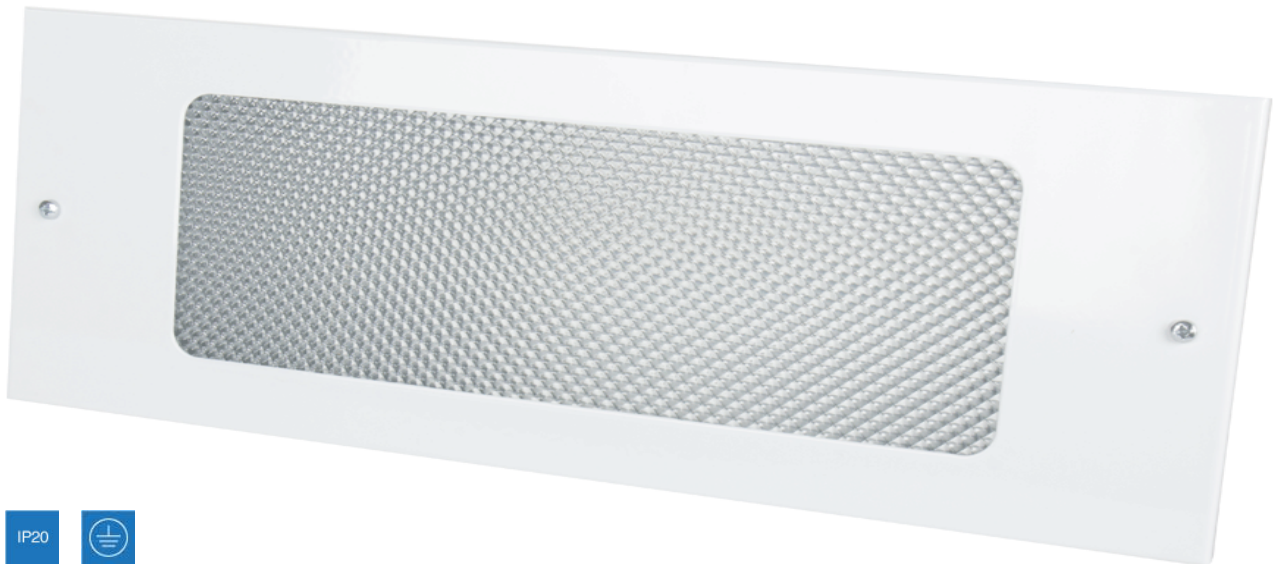


# WINDSOR

Recessed emergency bulkhead, 3 hours rated



5 YR

IP20



### Features:

Suitable for use on all escape routes

Fully flush design

Opal option available

3 hours rated

30,000 hours lifetime (L70/B50)

### Construction:

Steel body finished in white (RAL 9016)

Polycarbonate prismatic 850°C diffuser for use on all escape routes

Supplied as standard with neutral white (4000K) LED

### Options:

A3 - Emergency self test

O - Opal diffuser

# WINDSOR

Recessed emergency bulkhead, 3 hours rated

### Order Codes

All dimensions are in millimetres

Order code	Description	Lumens (lm)	Total power (W)	Efficacy (lm/W)	Weight (kg)
WINLEDM3	4W - 4000K Maintained		4		1.1

### Dimensions

All dimensions are in millimetres

Order code	A	B	C
WINLEDM3	412	150	85



### Installation instructions:

Recessed fix via mounted bracket (supplied)

### To specify:

Recessed flush emergency bulkhead as per Tamlite WINDSOR range

Please Note: Order codes listed are for standard (non-emergency) versions only. For all other gear options, please contact Tamlite Lighting.