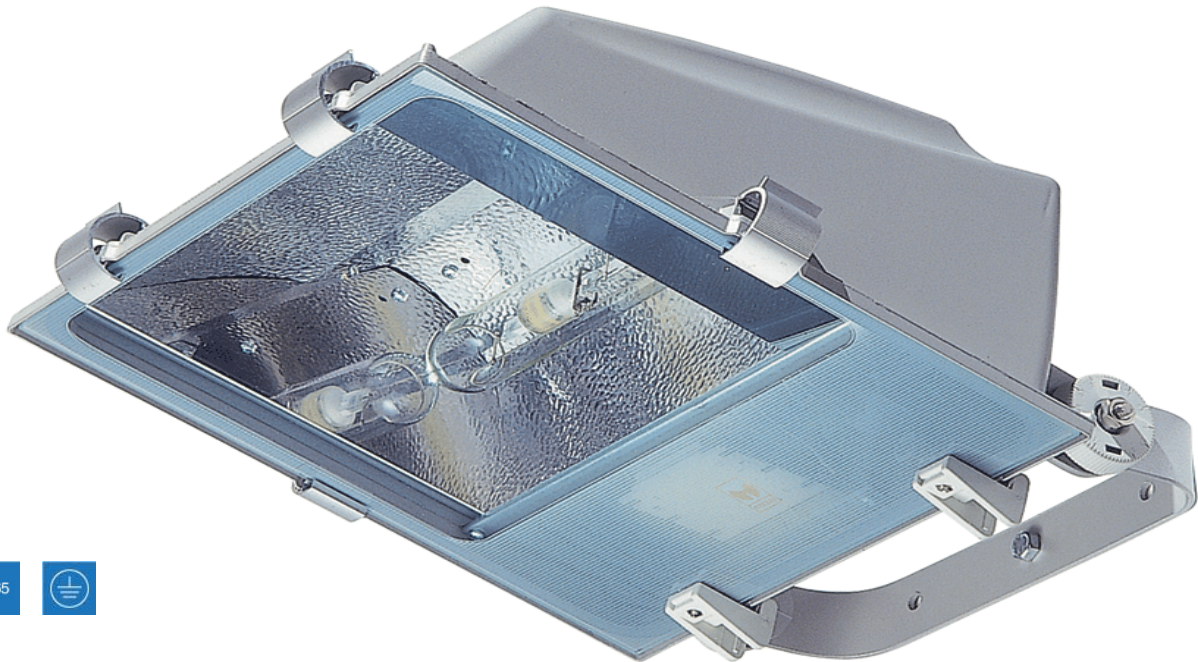


GXLH

High performance large area floodlight



1 YR

IP65



Features:

Modern, high performance floodlight
Ideal for sports ground installations
Symmetric reflector as standard
Maximum project area = 0.16m²

Construction:

Die-cast aluminium body finished in grey (RAL 9006)
Stainless steel external screws
IP68 M20 x 1.5 anti-tearing cable gland

Options:

No options available

GXLH

High performance large area floodlight

Order Codes

All dimensions are in millimetres

Order code	Description	Weight (kg)
GXLH400S	1 x 400W SON/T-PLUS	12.4
GXLH250S	1 x 250W SON/T-PLUS	11.1
GXLH150S	1 x 150W SON/T-PLUS	9.8
GXLH100S	1 x 100W SON/T-PLUS	9.2
GXLH250M	1 x 250W MBF/U	9.6
GXLH400HPI	1 x 400W HPI/T	10.8
GXLH250HPI	1 x 250W HPI/T	9.3

Dimensions

All dimensions are in millimetres

Order code	A	B	C
GXLH400S	430	545	215
GXLH250S	430	545	215
GXLH150S	430	545	215
GXLH100S	430	545	215
GXLH250M	430	545	215
GXLH400HPI	430	545	215
GXLH250HPI	430	545	215

Installation instructions:

Fixed via stirrup bracket and wired via rear cable entry

To specify:

Die-cast, high performance floodlight for use with high wattage discharge lamps as per Tamlite GXLH range

Please Note: Order codes listed are for standard (non-emergency) versions only. For all other gear options, please contact Tamlite Lighting.