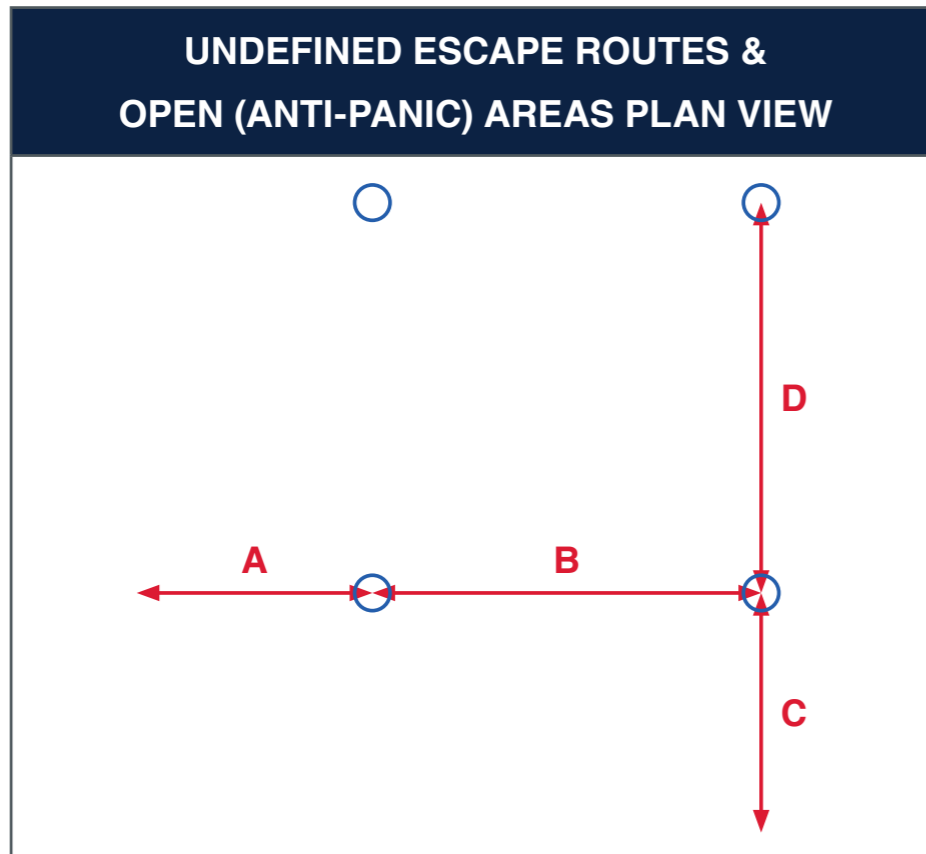
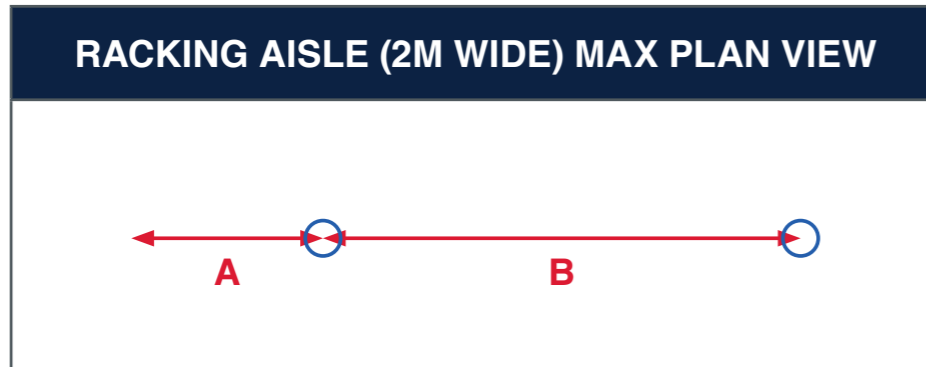


EMERGENCY LIGHTING SPACING TABLE

PRODUCT: ELITE SLS | **CODE:** ELSSNM3-C



Luminaire spacing for escape route

| MOUNTING HEIGHT | A | B |
|-----------------|------|-------|
| 2.5M | 5.0M | 11.5M |
| 3.0M | 5.0M | 12.5M |
| 4.0M | 5.5M | 13.0M |

Spacings calculated to achieve 1.0 lux minimum

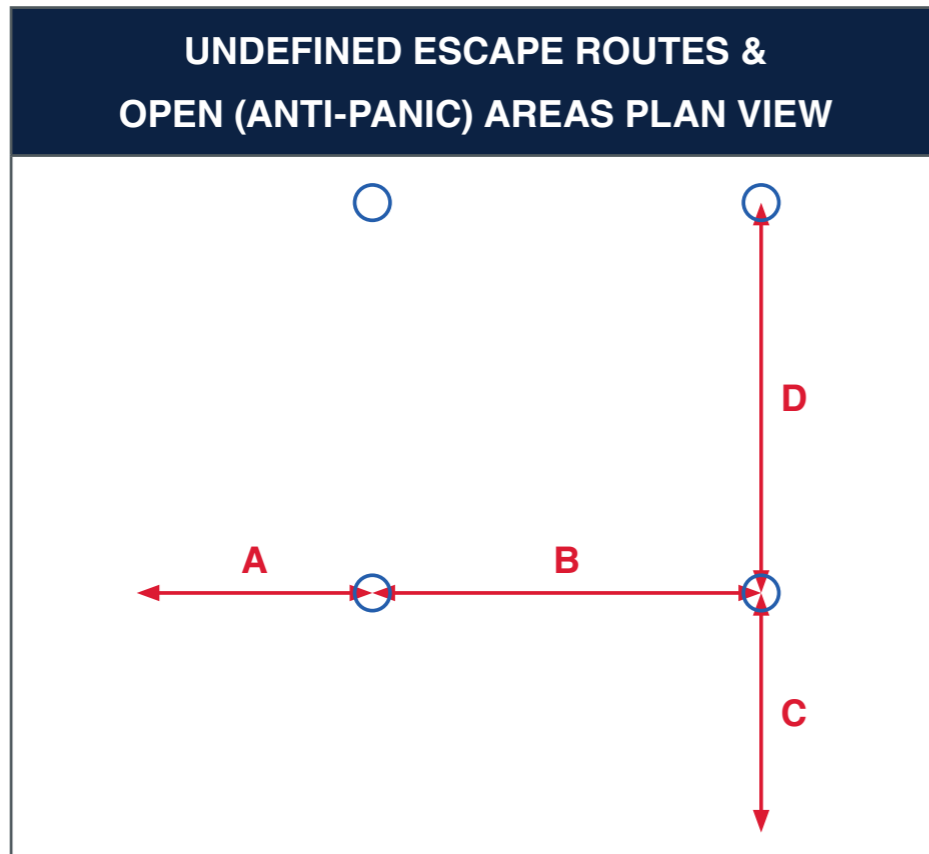
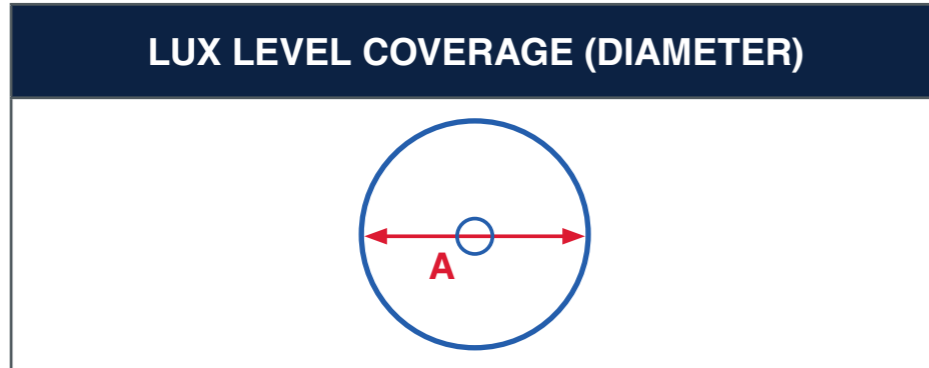
Luminaire is designed for corridor areas
Open area calculation is not applicable

| MOUNTING HEIGHT | A | B | C | D |
|-----------------|-----|-----|-----|-----|
| 2.5M | N/A | N/A | N/A | N/A |
| 3.0M | N/A | N/A | N/A | N/A |
| 4.0M | N/A | N/A | N/A | N/A |

Spacings calculated to achieve 0.5 lux minimum

EMERGENCY LIGHTING SPACING TABLE

PRODUCT: ELITE SLS | **CODE:** ELSSNM3-S



Coverage for high risk areas

| MOUNTING HEIGHT | 5 LUX | 15 LUX |
|-----------------|-------|--------|
| 2.5M | 2.2M | 1.4M |
| 3.0M | 2.4M | 1.6M |
| 4.0M | 2.4M | 1.4M |

Spacings calculated to achieve lux as shown

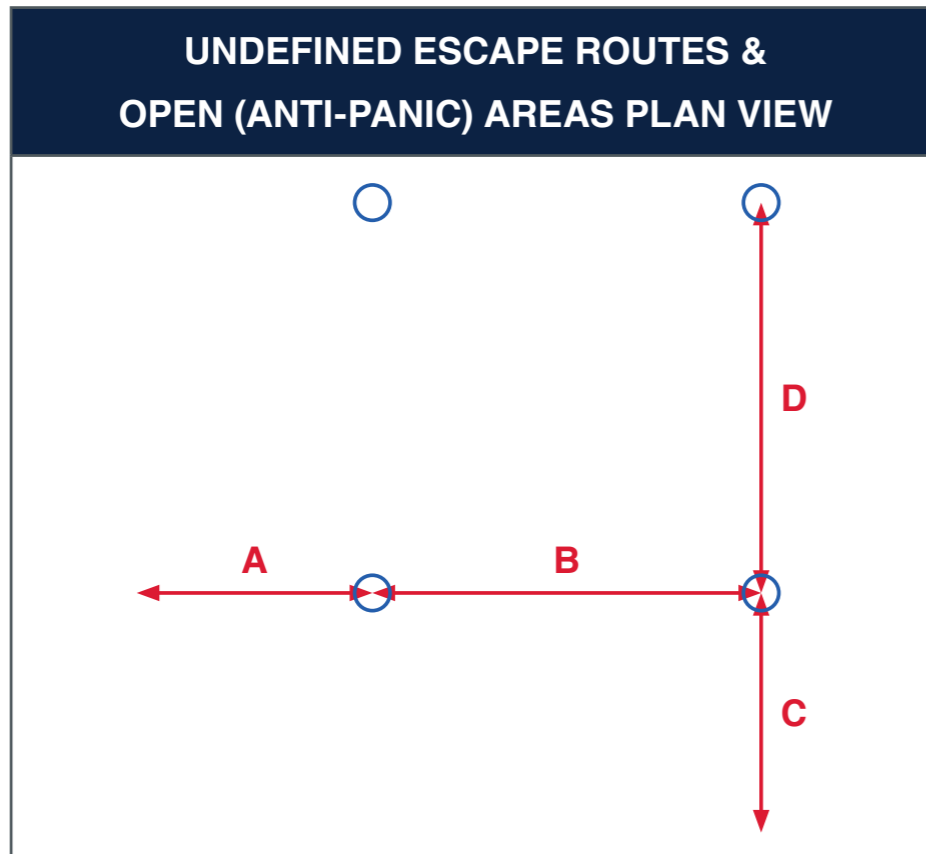
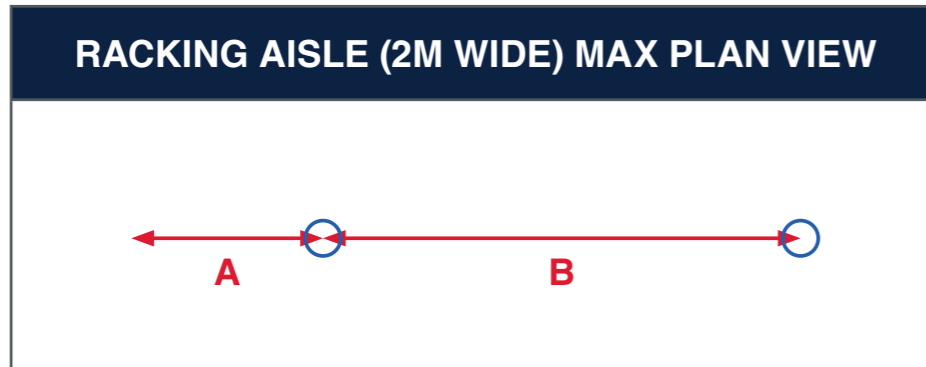
Luminaire spacing for undefined escape routes & open (anti-panic) areas

| MOUNTING HEIGHT | A | B | C | D |
|-----------------|------|------|------|------|
| 2.5M | 1.2M | 1.7M | 1.2M | 1.7M |
| 3.0M | 1.1M | 1.9M | 1.1M | 1.9M |
| 4.0M | 1.1M | 1.9M | 1.1M | 1.9M |

Spacings calculated to achieve 15 lux minimum

EMERGENCY LIGHTING SPACING TABLE

PRODUCT: ELITE SLS | **CODE:** ELSSNM3-W



Luminaire spacing for escape route

| MOUNTING HEIGHT | A | B |
|-----------------|------|-------|
| 2.5M | 4.0M | 10.0M |
| 3.0M | 3.5M | 10.0M |
| 4.0M | 3.5M | 9.5M |

Spacings calculated to achieve 1.0 lux minimum

Luminaire spacing for undefined escape routes & open (anti-panic) areas

| MOUNTING HEIGHT | A | B | C | D |
|-----------------|------|-------|------|-------|
| 2.5M | 4.0M | 10.5M | 4.0M | 10.5M |
| 3.0M | 4.0M | 11.5M | 4.0M | 11.5M |
| 4.0M | 4.0M | 13.0M | 4.0M | 13.0M |

Spacings calculated to achieve 0.5 lux minimum